

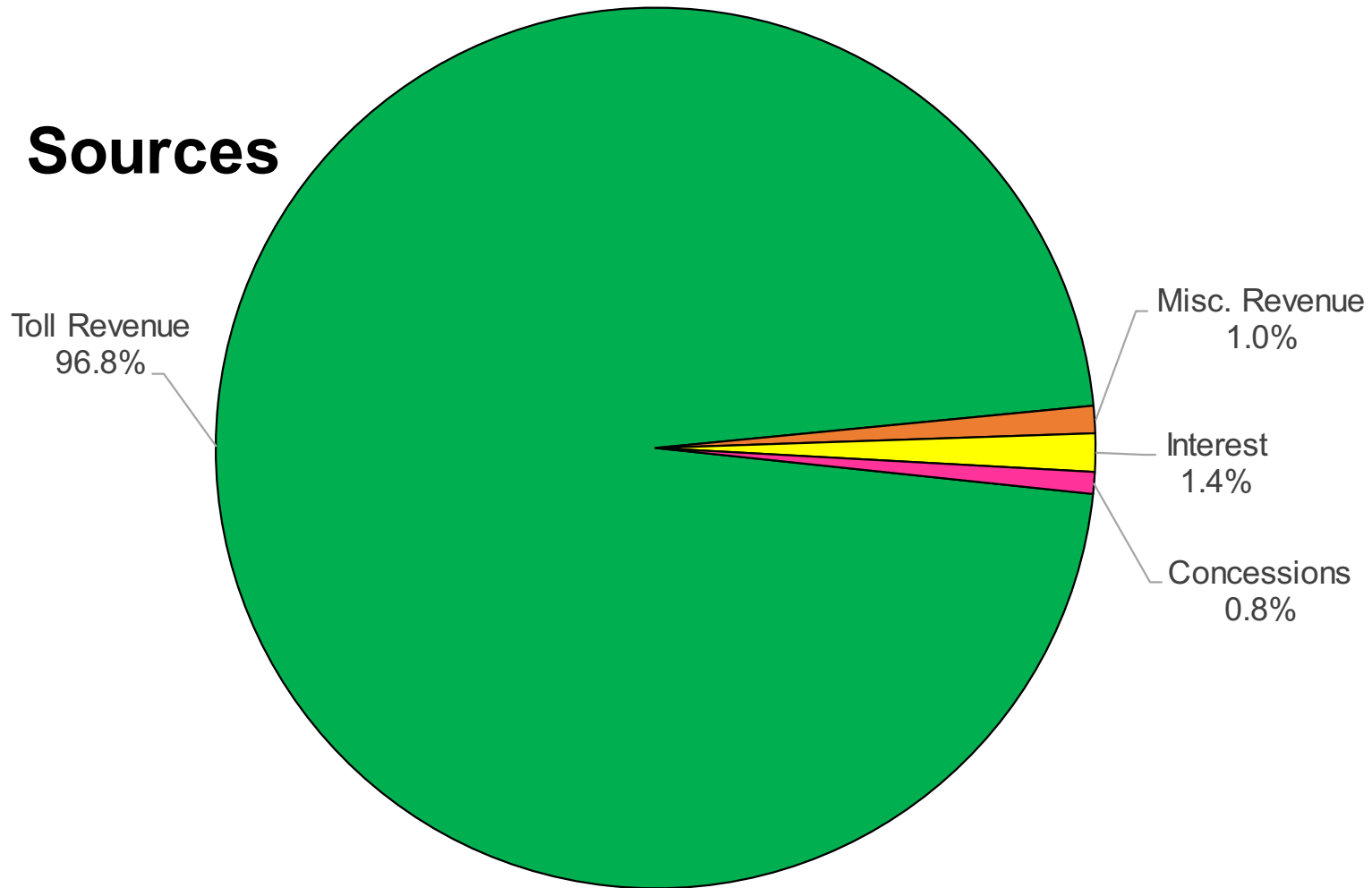
Oklahoma Turnpike Authority



Joe Echelle, P.E.
Assistant Executive Director

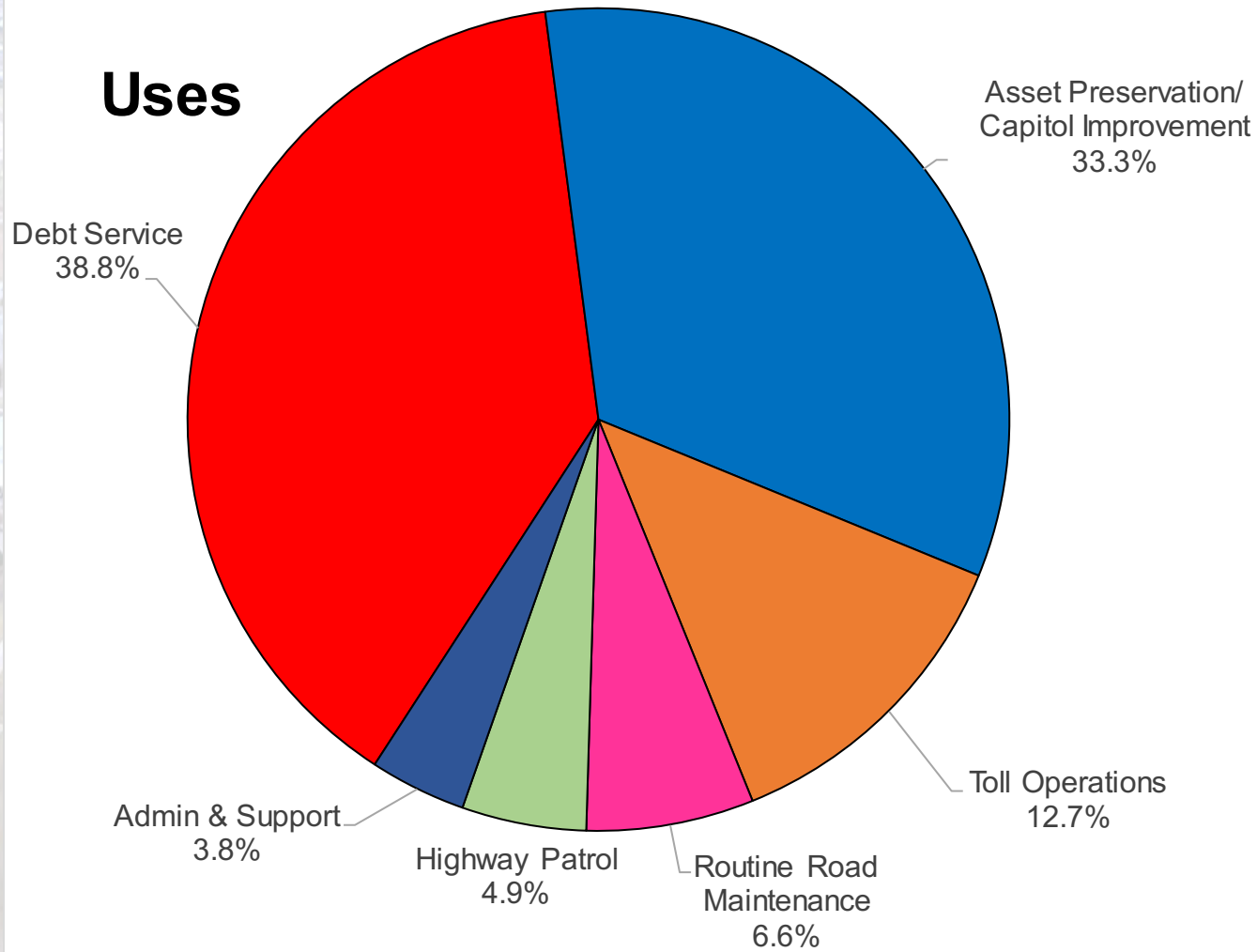
2019 Projected Revenue Information

Sources



Total 2019 Sources = \$334,789,000
Capital Fund Carryover = \$ 26,669,300
Total Sources = \$361,458,300

2019 Projected Revenue Information



Total Uses = \$361,458,300

OTA 5-Year Capital Plan

- 2018–2022 \$96 million per year
 - Capital Improvements
 - Ex. Cable Barrier/Toll Improvements
 - Asset Preservation
 - Ex. Mill/Inlay, DBR, Bridge Rehab
- Reprioritize Plan Annually
- Authority Approval in December
- Joint Projects with ODOT/Local Government

OCTOBER 29, 2015
\$1,140,000,000 PROGRAM

DRIVING FORWARD

INVESTING IN OKLAHOMA'S FUTURE

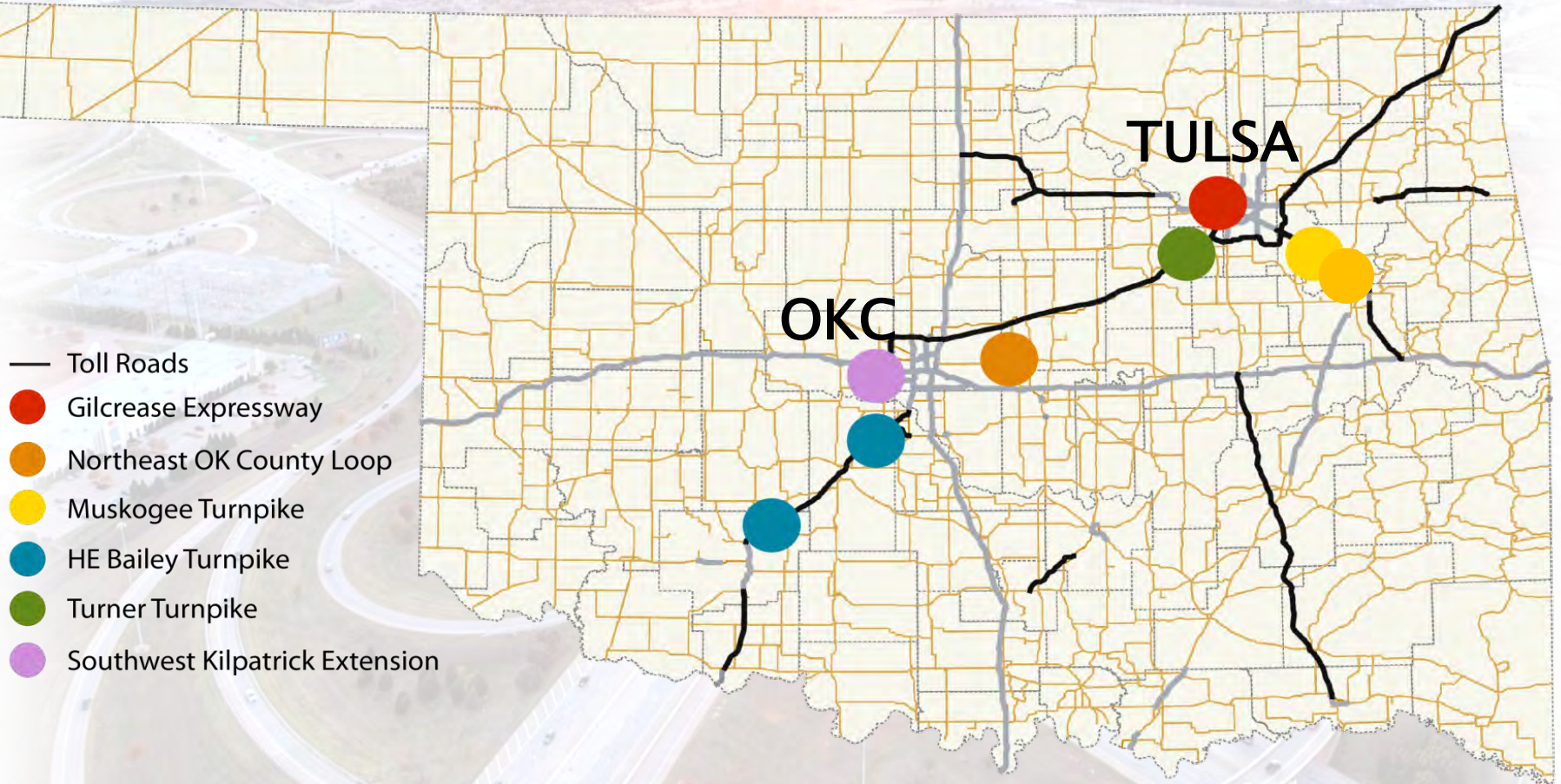
DrivingForwardOK.com

#DrivingForwardOK

Program Overview

- ▶ Six project locations which will modernize our roadways and improve safety throughout the state.
- ▶ **Does NOT affect the Oklahoma state budget.** Debt service paid by anticipated increases in revenue due to increased traffic and an approximate 17% increase in toll rate. Currently Oklahoma's toll rate is 55% below the national average.

Projects



\$200M Kilpatrick Extension

- Engineering Challenges
 - Meandering alignment
 - Avoidance of areas of environmental concern
 - Coordination with City of OKC
 - Five Complex interchanges with live traffic
 - Coordination with ODOT at SH-152 & I-40
 - Accelerated Right of Way Acquisition
 - Compressed timeline for Utility Relocation

\$300M Eastern Oklahoma County Turnpike

- Challenges
 - Minimizing Home Impacts
 - Finding a river crossing with minimal environmental impacts
 - Proximity to the OG&E Horseshoe Power Plant
 - Railroad bridge crossing
 - Coordination with ODOTs projects on I-40
 - Avoid or Minimize impacts to wetlands, streams, and ponds to facilitate USACE permit
 - Numerous Utility Relocates
 - Accelerated ROW acquisition

Turner Rendering



➤ Public Meeting 2017 image

Turner

- Barrier Wall with LED lighting
- Wide Shoulders
- 6 lanes



Turner Turnpike Widening

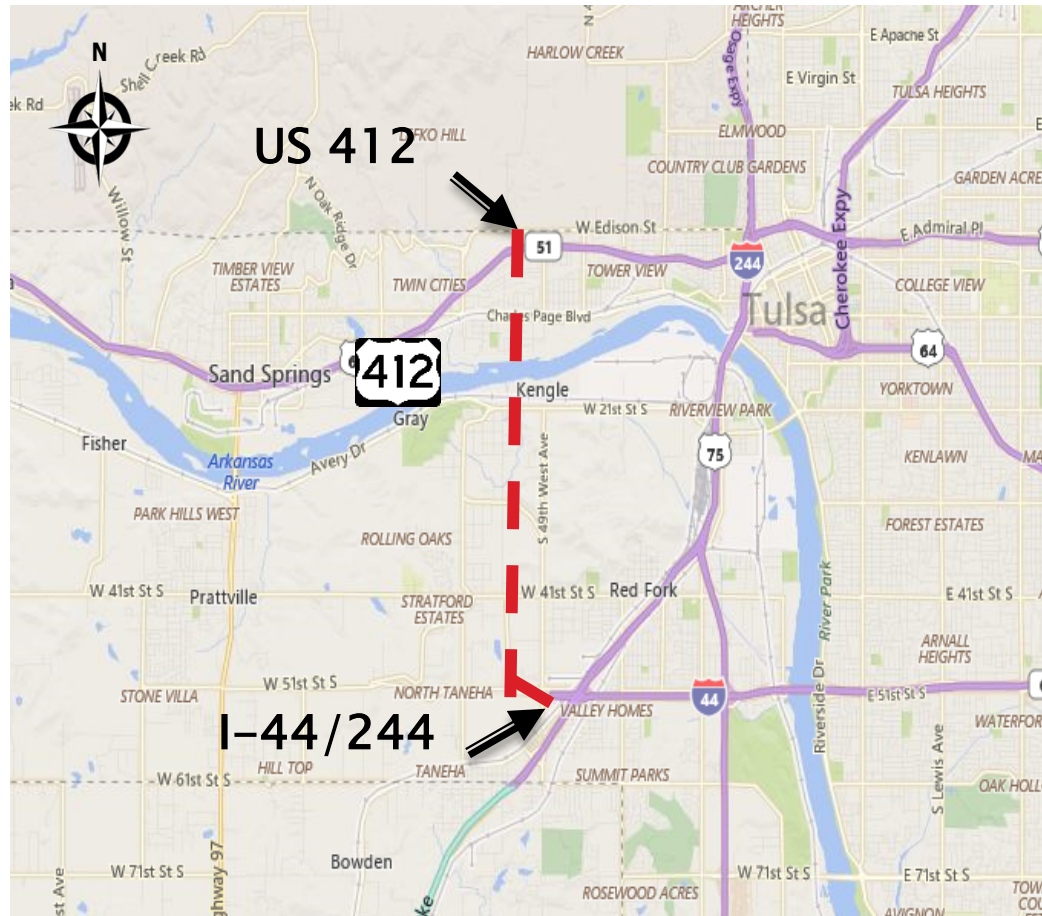


- Summary of design features:
 - 19 Bridge locations
 - 3 Interchanges
- Engineering Challenges
 - Heavy Live Traffic
 - Construction sequencing
 - Relocation of fiber line
 - Coordination of multiple contractors and designers
 - Multiple utility relocates

Driving Forward Bond Program Timeline

- Design Consultants Hired **Spring 2016**
- R/W Early Acquisition **Fall 2016**
- Bailey/Muskogee Improvements Start **Summer 2016**
Completion **2017**
- R/W Acquisition **Spring 2017**
- Utility Relocations **Spring 2017–Present**
- Construction Start **Summer 2017 – Turner**
- Construction Start **January 2018 – JKT/EOC**
- Turner Phase 1 Completion **Fall 2018**
- Turner Phase 2 Completion **Spring 2019**
- Turner Phase 3 Anticipated Start **Winter 2019/Spring 2020**
- JKT Extension Anticipated Opening **January 2020**
- EOC Anticipated Opening **by 2021**
- Turner Phase 3 Completion **by End of 2021**

Gilcrease Expressway



- New 5 Mile Alignment
- West Side of Tulsa
- Connects I-44 and US-412
- \$305 Million
- Cooperatively Financed
 - OTA
 - City of Tulsa
 - Tulsa County
 - ODOT
 - INCOG
 - FHWA
 - *Private Construction*
 - *Partner Short Term Loan*
- ROW Nearing Completion
- Utilities Relocating Now
- Construction November 2019
- <3 year project

Design Overview – W. 21st Street



ARKANSAS RIVER

BNSF RR

57TH W. AVE.

AVERY DR.

Design Overview – W. 21st Street



ARKANSAS RIVER

GILCREASE EXPRESSWAY

BNSF RR

TRAIL

57TH W. AVE.

AVERY DR.

T
U
L
S
A

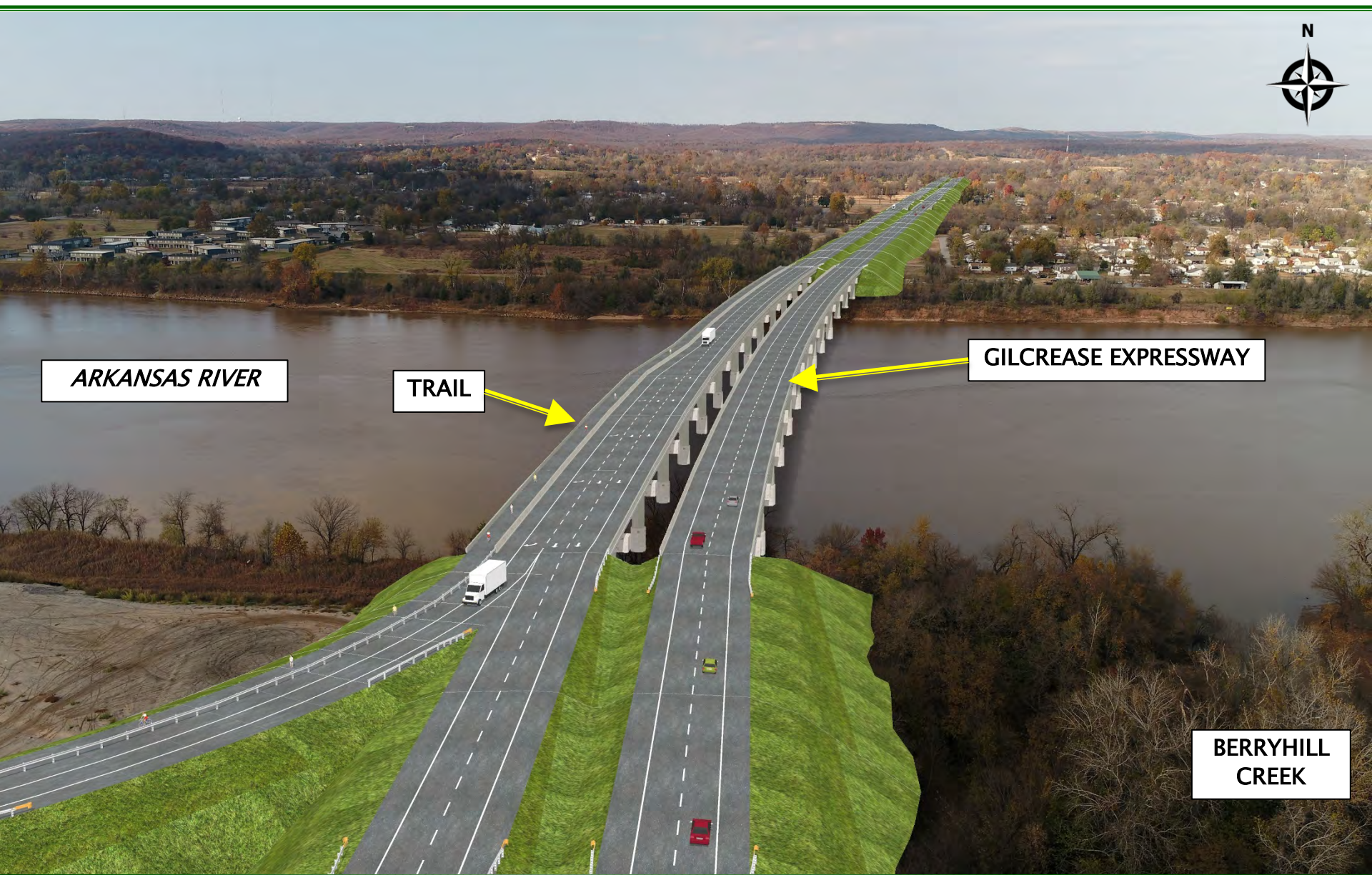
Design Overview – Arkansas River



ARKANSAS RIVER

**BERRYHILL
CREEK**

Design Overview – Arkansas River



ARKANSAS RIVER

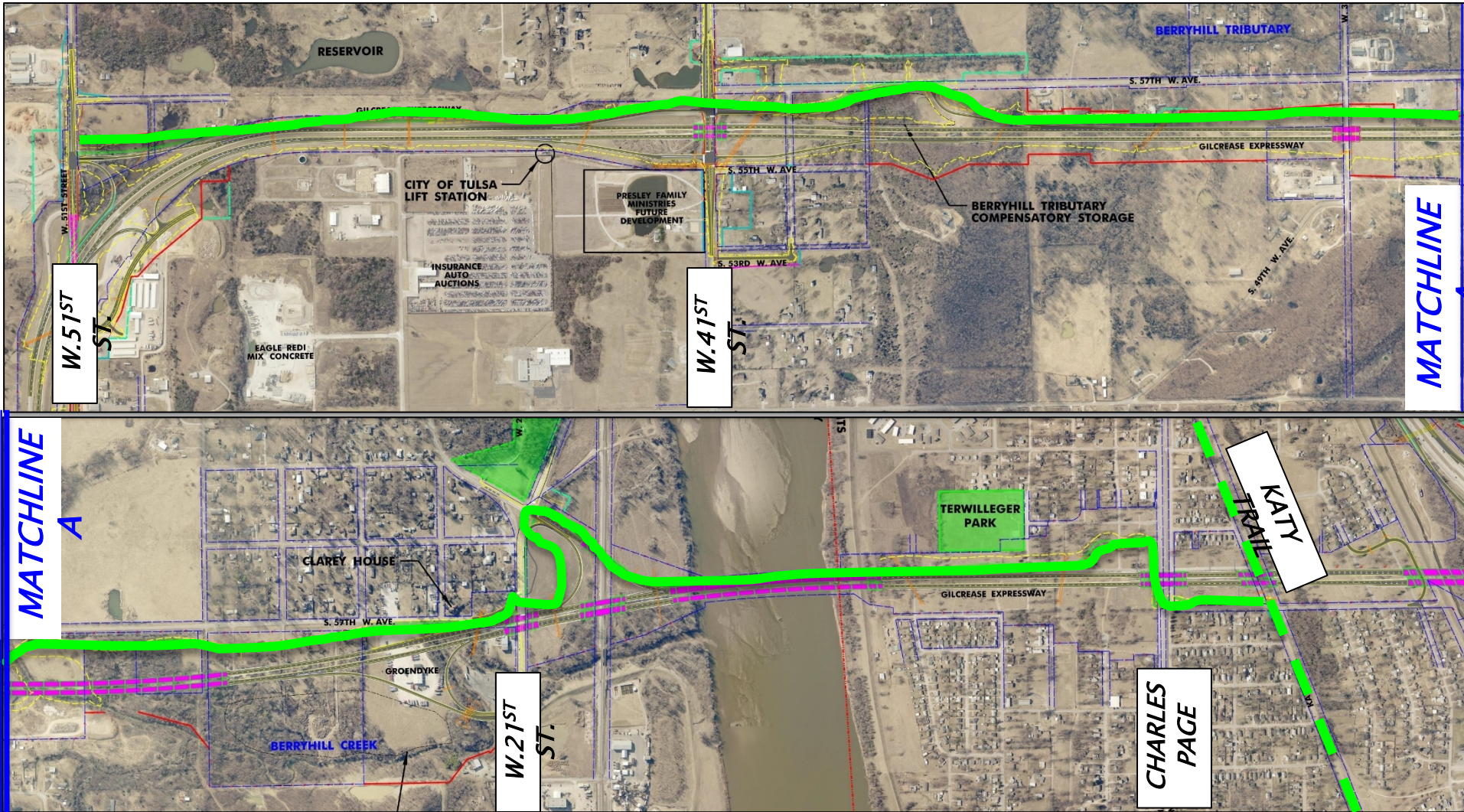
TRAIL

GILCREASE EXPRESSWAY

BERRYHILL CREEK

Design Overview

Multi-Use Trail – W. 51st St To Katy Trail



Questions?

Construction & ROW Hotline (405) 425-7456